

2007 CUP STYLE HEADSET INSTRUCTIONS



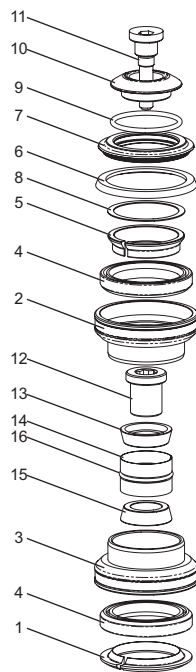
HOPE TECHNOLOGY

Hope Technology
Fernbank Avenue
Barnoldswick
BB18 5UY
United Kingdom

www.hopetech.com
Tel: +44 (0)1282 851 200
Fax: +44 (0)1282 851 201

Issue 01
April 2007

www.hopetech.com



Congratulations! You've just acquired the famous Hope headset. Just like any Hope component, this headset has been conscientiously designed, made, assembled and tested in the UK to offer you years of trouble free riding. To ensure that you'll get the most from this little piece of engineering, make sure your headset is fitted and maintained by a competent cycle mechanic. Enjoy the ride.

CUP STYLE HEADSET 2007			
ITEM	DESCRIPTION	QTY	PART NO.
1	FORK CROWN RACE	1	HS120
2	TOP CUP	1	HS121
3	BOTTOM CUP	1	HS122
4	BEARING	2	HS123
5	UPPER TAPERED RING	1	HS124
6	TOP SEAL	1	HS125
7	TOP COVER	1	HS126
8	0.4mm SHIM	3	HS127
9	28mm O-RING	1	HS112
10	TOP CAP	1	HS113
11	HEAD BOLT	1	HS114
12	CENTRE SCREW	1	HS115
13	PLAIN TAPER	1	HS116
14	OUTER SLEEVE	1	HS117
15	THREADED TAPER	1	HS118
16	22mm O-RING	1	HS119



2007 CUP STYLE HEADSET INSTRUCTIONS



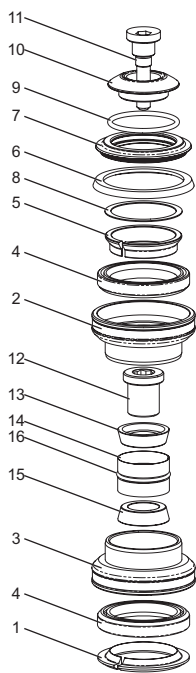
HOPE TECHNOLOGY

Hope Technology
Fernbank Avenue
Barnoldswick
BB18 5UY
United Kingdom

www.hopetech.com
Tel: +44 (0)1282 851 200
Fax: +44 (0)1282 851 201

Issue 01
April 2007

www.hopetech.com



Congratulations! You've just acquired the famous Hope headset. Just like any Hope component, this headset has been conscientiously designed, made, assembled and tested in the UK to offer you years of trouble free riding. To ensure that you'll get the most from this little piece of engineering, make sure your headset is fitted and maintained by a competent cycle mechanic. Enjoy the ride.

CUP STYLE HEADSET 2007			
ITEM	DESCRIPTION	QTY	PART NO.
1	FORK CROWN RACE	1	HS120
2	TOP CUP	1	HS121
3	BOTTOM CUP	1	HS122
4	BEARING	2	HS123
5	UPPER TAPERED RING	1	HS124
6	TOP SEAL	1	HS125
7	TOP COVER	1	HS126
8	0.4mm SHIM	3	HS127
9	28mm O-RING	1	HS112
10	TOP CAP	1	HS113
11	HEAD BOLT	1	HS114
12	CENTRE SCREW	1	HS115
13	PLAIN TAPER	1	HS116
14	OUTER SLEEVE	1	HS117
15	THREADED TAPER	1	HS118
16	22mm O-RING	1	HS119



CUP STYLE HEADSET INSTRUCTIONS

1/ FITTING CUPS :

Firstly, ensure both ends of head tube are parallel and of correct size. If necessary ream the bore and face each end of the head tube.

Chamfer the inside edges of the head tube at both ends.

Press in both cups (2 and 3) using a headset press fitted with Hope adaptors. Use the laser etched Hope logo to ensure the cups are fitted in the correct end of the head tube.

2/ FITTING CROWN RACE :

Slide the fork crown race (1) onto the steerer tube with the flat side to the bottom. Then slide the bottom bearing (4) on top of the fork crown race (1).

3/ CUTTING STEERER :

Fit forks into frame. Slide the complete top assembly and stem over steerer. Ensure all parts are pushed together firmly.

Scribe a line flush with the top of the stem.

Remove stem and cut steerer in a straight line 3mm below the line.

Remove all sharp edges.

With 8mm allen key, adjust Head Doctor (items 12 to 16) until a slide fit inside steerer and insert it 10mm into steerer.

Tighten until solid in steerer.

4/ FINAL ASSEMBLY :

Liberaly apply good quality waterproof grease to all bearings (4) and sealing surfaces. When fitting ensure that the top seal (6) is fitted correctly.

Insert forks into frame.

Over the steerer, fit upper taper ring (5), shims (8) if necessary, sealing cover (6) and top cover (7) with o'ring (9). You may have to stack several 0.4mm shims (8) to reduce the drag of the top seal (6).

Fit stem and top cap (10). Tighten bolt (11) in top cap until forks rotate smoothly without play or restriction.

Clamp stem to manufacturer recommended torque.

The headset may need adjustment after the first few rides, this is normal due to the settling of the components.

www.hopetech.com



CUP STYLE HEADSET INSTRUCTIONS

1/ FITTING CUPS :

Firstly, ensure both ends of head tube are parallel and of correct size. If necessary ream the bore and face each end of the head tube.

Chamfer the inside edges of the head tube at both ends.

Press in both cups (2 and 3) using a headset press fitted with Hope adaptors. Use the laser etched Hope logo to ensure the cups are fitted in the correct end of the head tube.

2/ FITTING CROWN RACE :

Slide the fork crown race (1) onto the steerer tube with the flat side to the bottom. Then slide the bottom bearing (4) on top of the fork crown race (1).

3/ CUTTING STEERER :

Fit forks into frame. Slide the complete top assembly and stem over steerer. Ensure all parts are pushed together firmly.

Scribe a line flush with the top of the stem.

Remove stem and cut steerer in a straight line 3mm below the line.

Remove all sharp edges.

With 8mm allen key, adjust Head Doctor (items 12 to 16) until a slide fit inside steerer and insert it 10mm into steerer.

Tighten until solid in steerer.

4/ FINAL ASSEMBLY :

Liberaly apply good quality waterproof grease to all bearings (4) and sealing surfaces. When fitting ensure that the top seal (6) is fitted correctly.

Insert forks into frame.

Over the steerer, fit upper taper ring (5), shims (8) if necessary, sealing cover (6) and top cover (7) with o'ring (9). You may have to stack several 0.4mm shims (8) to reduce the drag of the top seal (6).

Fit stem and top cap (10). Tighten bolt (11) in top cap until forks rotate smoothly without play or restriction.

Clamp stem to manufacturer recommended torque.

The headset may need adjustment after the first few rides, this is normal due to the settling of the components.

www.hopetech.com

